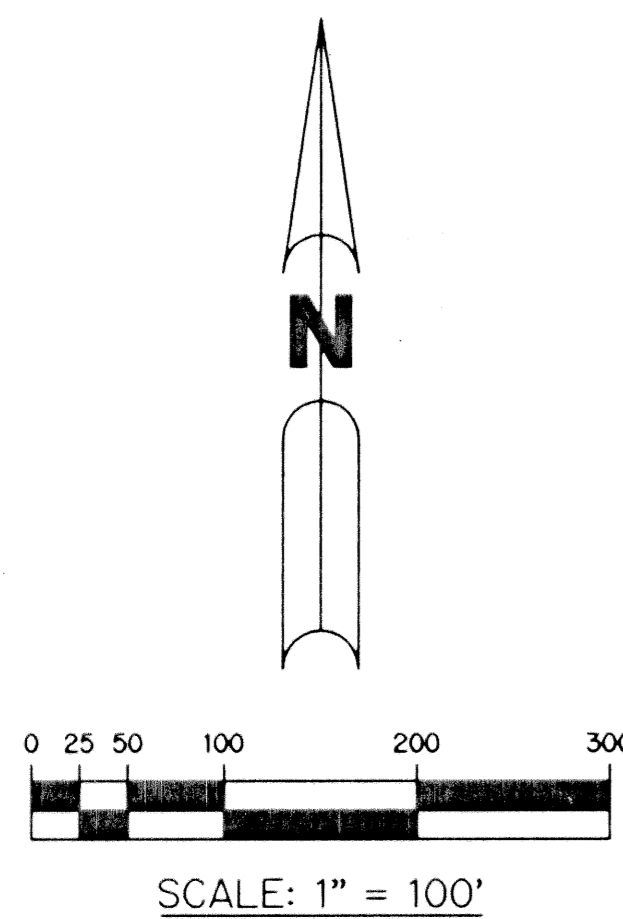


CARLETON OAKS

CARLETON OAKS PLANNED UNIT DEVELOPMENT
BEING A PARCEL OF LAND LYING IN THE WEST ONE-QUARTER OF SECTION 13,
TOWNSHIP 42 SOUTH, RANGE 41 EAST, PALM BEACH COUNTY, FLORIDA.

SHEET 9 OF 10 JUNE, 2001

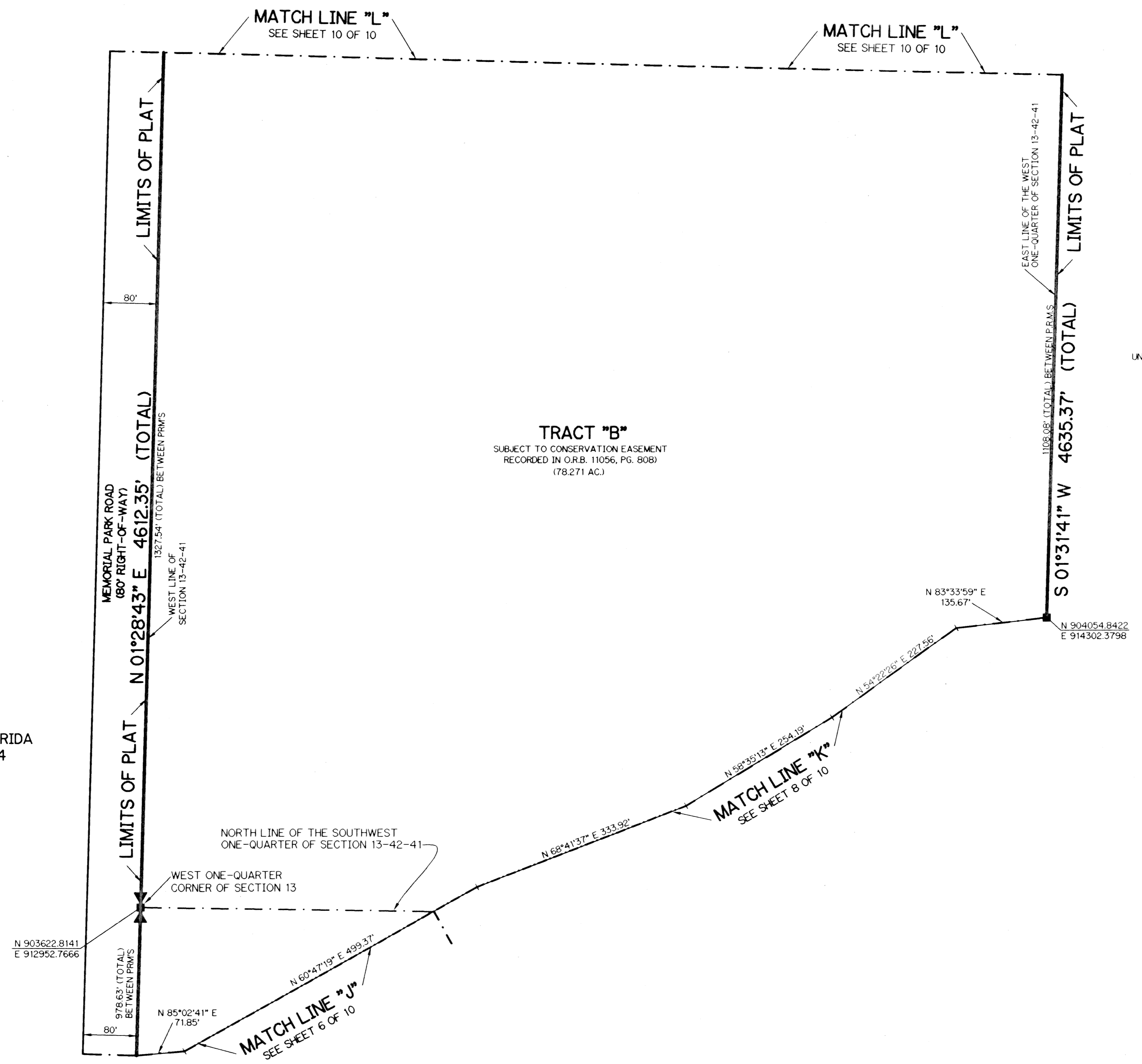
153



SHALOM MEMORIAL PARK
(PER P. B. 31, PGS. 194 -195)

THIS INSTRUMENT PREPARED BY
WILBUR F. DIVINE, P.S.M. 4190, STATE OF FLORIDA
LAWSON, NOBLE AND WEBB, INC., LB-6674
ENGINEERS PLANNERS SURVEYORS
420 COLUMBIA DRIVE, SUITE 110
WEST PALM BEACH, FLORIDA

SUBDIVISION CARLETON OAKS
BOOK 97L PAGE 153
FLOOD ZONE B FLOOD MAP # 0050B
QUAD # 5B ZONING PUD
TAZ 825 ZIP CODE 33412
PDD NAME CARLETON OAKS



UNPLATTED

NOTE:

COORDINATES SHOWN ARE GRID COORDINATES
DATUM = NAD 83 (1990 ADJUSTMENT)
ZONE = FLORIDA EAST ZONE
LINEAR UNIT = U.S. SURVEY FEET
COORDINATE SYSTEM 1983 STATE PLANE
TRANSVERSE MERCATOR PROJECTION
ALL DISTANCES ARE GROUND
SCALE FACTOR = 1.0000171
NO ROTATION

LEGEND:

- - SET PERMANENT REFERENCE MONUMENT, LB-6674
 - - PERMANENT CONTROL POINT, LB-6674
 - △ - DELTA ANGLE
 - B.E. - BUFFER EASEMENT
 - C. - CENTERLINE
 - C.B. - CHORD BEARING
 - C.H. - CHORD LENGTH
 - D.B. - DEED BOOK
 - D.E. - DRAINAGE EASEMENT
 - L. - ARC LENGTH
 - L.A.E. - LIMITED ACCESS EASEMENT
 - L.M.A.E. - LAKE MAINTENANCE ACCESS EASEMENT
 - L.M.E. - LAKE MAINTENANCE EASEMENT
 - L.W.D.D. - LAKE WORTH DRAINAGE DISTRICT
 - NR. - NOT RADIAL
 - N.T.S. - NOT TO SCALE
 - O.R.B. - OFFICIAL RECORD BOOK
 - P.B. - PLAT BOOK
 - PGS. - PAGES
 - PRM - PERMANENT REFERENCE MONUMENT
 - P.S.M. - PROFESSIONAL SURVEYOR AND MAPPER
 - R. - RADIUS
 - R/W - RIGHT-OF-WAY
 - S.T. - SURVEY TIE
 - U.E. - UTILITY EASEMENT
 - W.S.E. - WATER AND SEWER EASEMENT
- N 814602.8657 - DENOTES STATE PLANE COORDINATES
E 785753.1680

